

OWN YOUR OWN PIECE OF HERITAGE CRAFT



Carved Stone Auction Catalogue

Welcome to Worcester Cathedral's first ever sealed bid carved stone auction. We are delighted to offer you the opportunity to bid for your own piece of heritage craft, created by our talented apprentice stone masons.

These beautiful, handcrafted pieces of stone have been carefully chosen by our Master Mason, Darren Steele, to form ten auction lots. They reflect great talent and skill, both past and present.

Lot One

This limestone, called Stokeground, was sourced from Box Quarry in Wiltshire. The stone moulding is based on a classical design, the two relief 'fleur-de-lis' patterns were relief carved into the moulding as an enrichment to the stone.

This stone would make a nice backdrop piece for an interior setting or in a garden design.

Completed by a Level 4 Apprentice / 500mm x 230mm x 165mm

Reserve price: £110.00 / approx. 25kg



Lot Two

This limestone, called Stokeground, was sourced from Box Quarry in Wiltshire. The stone moulding is based on a basic classical design, the column with simple cap and base mouldings.

This stone would make for an ideal pedestal, with many uses, either indoors or in your garden.

Completed by a Level 4 Early Years Mason / 254mm x 254mm x 390mm

Reserve price: £110.00 / approx. 30kg



Lot Three

This limestone called Monkspark, was sourced from the Cotswolds. The stone moulding is based on a classical design with a 'Tudor Rose' enrichment to the sunken moulding.

This stone would make wonderful backdrop in a garden design or interior setting.

Completed by a Level 3 Apprentice / 280mm x 160mm x 404mm

Reserve price: £150.00 / approx. 20kg



Lot Four

This limestone, called Lepine, was sourced from France. The stone moulding is based on a simple classical design showing a carved flower.

The piece is unfinished, but this adds to the ambience of the stone as do the beautiful weathering markings.

Completed by a Level 4 Apprentice / 210mm x 270mm x 300mm

Reserve price: £115.00 / approx. 20kg



Lot Five

This red sandstone, called St Bees, was sourced from Cumbria. The stone moulding is based on a simple classical design and would make a nice base for a pot plant or as a stand-alone piece indoors or outdoors.

Completed by a Level 3 Apprentice / 230mm x 230mm x 230mm

Reserve price: £90.00 / approx. 20kg



Lot Seven

This sandstone called Red Hollington was sourced from Staffordshire. The carving is a practice piece, executed to gain experience in capturing the design for a replacement pinnacle, here at Worcester Cathedral. The original pinnacle fell off the main tower due to a storm in 2021.

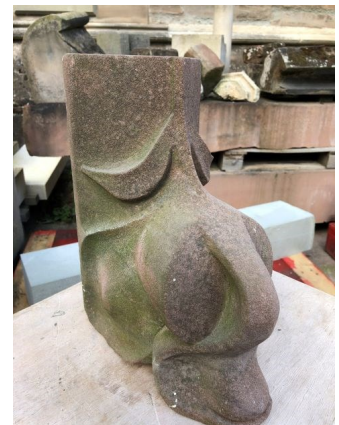
*Completed by a Qualified Mason / 130mm x 200mm x 330mm
Reserve price: £85.00 / approx. 8kg*



Lot Six

This sandstone, called Corsehill, was sourced from the Scottish borders. The carving is a practice piece, executed to gain experience in capturing the design for a replacement pinnacle here at Worcester Cathedral. The original pinnacle fell off the main tower due to a storm in 2021.

*Completed by a Newly Qualified Mason / 150mm x 220mm x 305mm
Reserve price: £90.00 / approx. 20kg*



Lot Eight

This red sandstone, called St Bees, was sourced from Cumbria. The stone moulding is based on a simple classical design and would make a nice base for a pot plant or as a stand-alone piece indoors or outdoors.

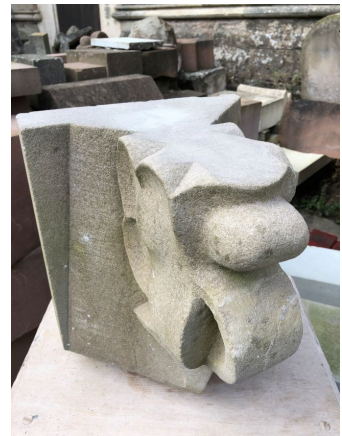
*Completed by a Level 3 Apprentice / 230mm x 230mm x 230mm
Reserve price: £90.00 / approx. 20kg*



Lot Nine

This sandstone, called White Hollington, was sourced from Staffordshire. The carving is a practice piece, executed to gain experience in capturing the design for a replacement pinnacle here at Worcester Cathedral. The original pinnacle fell off the main tower due to a storm in 2021.

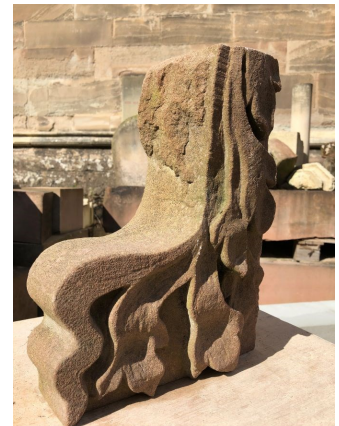
*Completed by a Qualified Mason / 290mm x 300mm x 320mm
Reserve price: £110.00 / approx. 30kg*



Lot Ten

This sandstone, called Corsehill, was sourced from the Scottish borders. The carving is a practice piece, executed to gain experience in capturing the design for a replacement pinnacle here at Worcester Cathedral. The original pinnacle fell off the main tower due to a storm in 2021.

*Completed by a Newly Qualified Mason / 130mm x 235mm x 300mm
Reserve price: £95.00 / approx. 8kg*



Please let us have your sealed-bid by 20:00 on Sunday 1 December 2024. The highest bid holder on each lot will be contacted on 3 December with the good news. All lots purchased must be collected from Worcester Cathedral by Friday 13 December 2024 and upon cleared funds being received. The buyer will be responsible for collection. The stones vary in weight from 8kg to 30kg. Each stone has a reserve placed upon it. If this is not met the stone will remain the property of Worcester Cathedral. Worcester Cathedral reserves the right to reject any and all bids.

All proceeds will be used to support our Stonemason team in their work to preserve Worcester Cathedral for future generations to enjoy as we do today. Thank you for your support.