



WORCESTER
CATHEDRAL

Art in Sacred Spaces

**Tuesday 1st August -
Wednesday 30th August
2023**

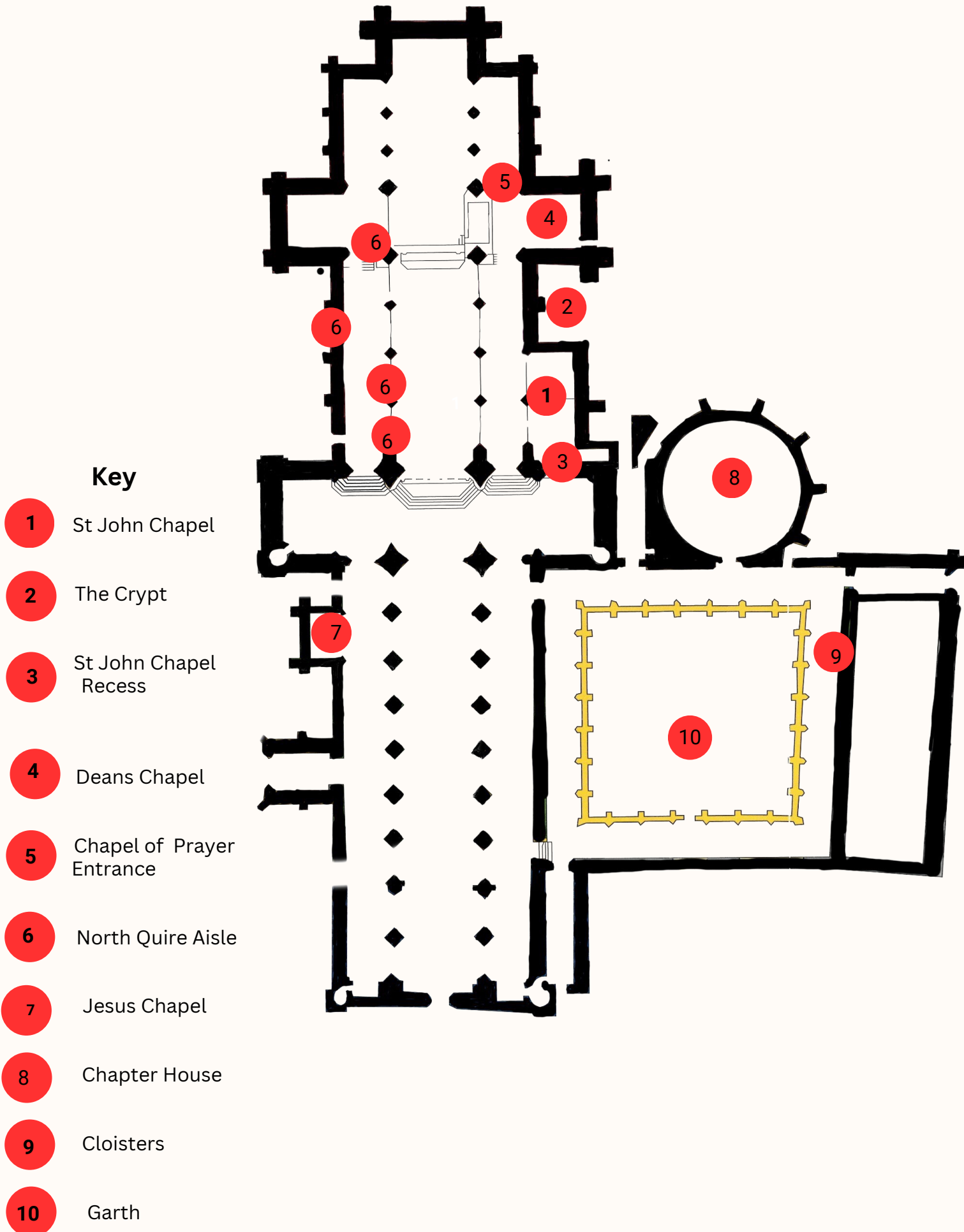
**Monday - Saturday 10:00 - 17:00
Sunday 12:30 - 15:00**



**10 PROFESSIONAL VISUAL ARTISTS, 2 SCHOOLS, 1 COMMUNITY ART
INSTALLATION**

Cathedral Floorplan

Exhibition Locations



01 THE ST JOHN CHAPEL

Stephen Myers

Drawing upon a set of technical skills learnt during a diverse fashion career, Stephen's work showcases manual, digital and engraving techniques. His portfolio is intended to elevate drawing to a new level of preciousness; he has been inspired by how the humble art of dress making has been elevated by the fashion industry into haute couture. His work and especially his glass engraving work is intended to mimic this elevating process, whilst also dealing with central issues of spirituality and transcendence. The MA exhibition in September 2013 which looked at 21st Century London and its narratives of utopian dreams and dystopian realities.

More recent exhibitions look at the natural elements of weather and nature in the City. The series of TV programs "Life after people" by David de Vries on the ultimate victory of nature over the built environment has been the inspiration. The constant presence of the natural world in the City wishing to reclaim man-made structures. The drawings also look at the sense of scale between the city and its atmosphere.



02 THE CRYPT

Gethsemane Garments by Rev Peter Privett

The garments you see are created using a mixture of machine and hand sewing using dyed, painted and printed materials. The four Garments explore the suffering and hope of the world and each Garment explores one particular aspect. The colours reflect the cycle of the liturgical year. Pain, Hope and Resurrection intermingle and are intimately related. Use the garments for your understanding of personal journeys through pain, suffering and hope.



This exhibition is provided by
Westhill Endowment

03 ST JOHN CHAPEL RECESS

Octave by Elizabeth Gray-King

Elizabeth is a professional artist, visual theologian and an ordained minister in the United Reform Church. She exhibits widely and creates art works within worship. She is employed part time as the Education for Ministry Programme Officer for the United Reform Church. Octave is a series of 8 paintings. The paintings encourage us to pause and ponder how we see ourselves in the world and how we relate to others. The paintings use colour theory to explore the themes: Hear. Watch. Fly. Chill. Call. Wait. Leap. Be



This exhibition is provided by Westhill Endowment

Westhill
make things happen

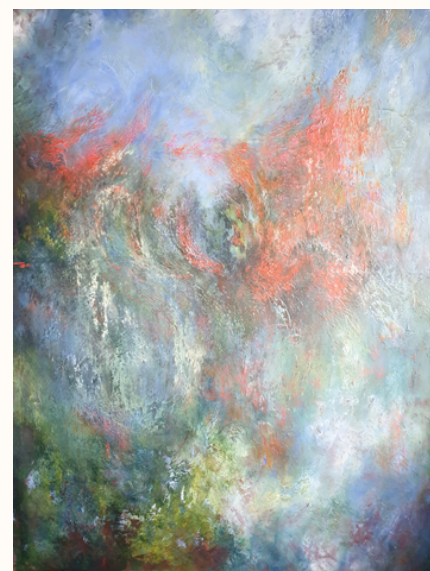
04 THE DEANS CHAPEL

Helen Rands

"Rule number one: Don't sweat the small stuff. Rule number two: It's all small stuff" Robert S. Eliot
Struggles with anxiety and overthinking restrict beauty and simplicity of now. We can all feel engulfed and overwhelmed by the everyday and it is difficult to break that tendency.

My paintings encompass the light and shade of life but focus on an expression of the positive. Bold colours and rich textures convey optimism and energy which drive serenity rather than despair.

Inspiration comes mainly from Frank Bowling and Barbara Rae.



05 ENTRANCE TO THE CHAPEL OF PRAYER

Anthony Cooper

Having had an interest in art from an early age, I would draw, paint, make pottery and wooden sculptures. Many years later I began working with stained glass and it is this that has become my passion.

The themes I choose are often ethereal or influenced by nature. Each piece is unique and I am always happy to create a bespoke design to meet a personal taste. I have made very personalised pieces of glass art for birthdays, weddings, anniversaries, christenings and in remembrance.



06 NORTH QUIRE AISLE

Deposition by Simon Ephraim Rice

The painting depicts the scene at Golgotha as Christ was being taken down from the cross after being crucified. All the characters shown, apart from the baby and the figure with the skull were present at the time, according to the gospels.

Joseph of Arimathea, behind the curtain and Nicodemus, the pointing figure that took Jesus down. Present also were Mary Magdalene, the Virgin Mary and Mary Salome. You might also see Dismas who was crucified beside Jesus.

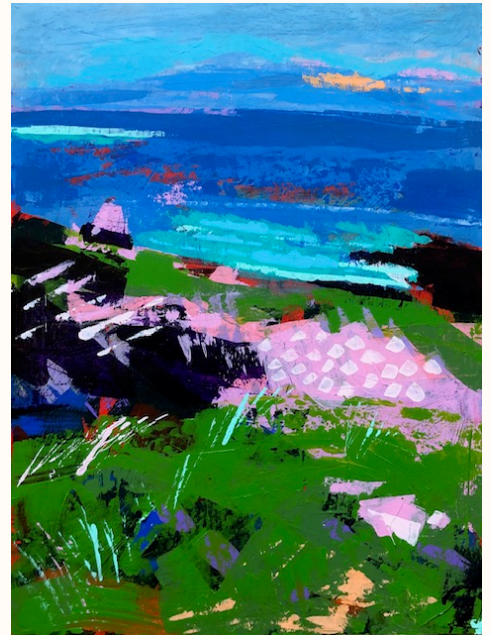
More information can be found at:
ephraimriceart.co.uk



06 NORTH QUIRE AISLE

Springtime Iona by Sara Hayward

These paintings hope to capture something of Iona's other worldly nature. On one visit, decided only the day before, I set off from Worcester at dawn and stepped out onto the shores of Iona that very same evening, both exhausted and exhilarated. Great peace came to me exploring the island on foot; I felt cossetted by my surroundings. From the grassy Machair, to the craggy rocks on Iona's many beaches, the sea and sky expand to envelop and comfort. Filled with the ordinary and extraordinary, Iona is a Godly place in which to simply be; a breath of fresh air.



06 NORTH QUIRE AISLE

RGS Dodderhill

Pupils at RGS Dodderhill start having specialist Textiles teaching from age 9. They start their creative journey learning how to use the sewing machine and spend their subsequent years with us exploring and developing their skills and talents. The garments on display realise the end of an individual pupils' textiles journey. At GCSE pupils choose their own personal themes and develop investigations and outcomes depending on their individual strengths and interests. Many pupils also choose to produce Art Textiles, Interior or Craft based pieces.



RGS Worcester

Year 12 students at the Royal Grammar School Worcester, are encouraged to consider the impact that fashion and textiles has on the environment and how, as young designers, their choices can have a positive effect. The 'Sustainability in Fashion' collection encourages the students to reuse, recycle, repurpose and reinvent denim, using fabric from the classic pair of jeans.

The traditional indigo tie-dye technique of Shibori, is combined with intricate pattern cutting and three-dimensional structure, to create thought-provoking pieces with patchwork and machine embroidery used to add colour and texture.



07 THE JESUS CHAPEL

Micky Faragher

Primarily, these assemblies are navigational schematics, taking interest in the cardinal positions of the Sacred gnomon of which they consist, finding synchronicity with the numerical sequence forming the Hebrew name of God.

The structure to the assembly is the golden $72/36$ degree isosceles, found common place in Sacred geometry and knowledge that has been kept safe in priesthoods for far longer than we've been able to record. Here, we are given a formula revealing how we are in the the shadow of our creator.



08 THE CHAPTER HOUSE

Daisy Chain Nathan Garner

The daisy symbolises purity, new beginnings, joy and cheerfulness. The pastime of making daisy chains goes back hundreds of years when they were worn as head wreaths or belts. However, the daisy chain is more than a pretty garland as they symbolise fidelity and eternal love. "Daisy Chain" is an installation created by schools, clubs and organisations around Worcestershire, Shropshire and Herefordshire borders. The installation was inspired by the circular architecture of Worcester Cathedral Chapter House and the link with local communities.

The result is a wonderful installation of mark making and artistry.



09 THE CLOISTERS

Lost and Found by Maggie Marshall

The work explores the concept of lost and found objects; the things we leave behind, and the objects we discover that someone else has lost. Each unclaimed object has its own mysterious history and the work alludes to the people that once owned and cherished these possessions and the unknown journey that our own lost objects take. The sculpture was created as part of Maggie's A Level Art at The King's School, Worcester. She is currently studying Fine Art the University of Leeds.

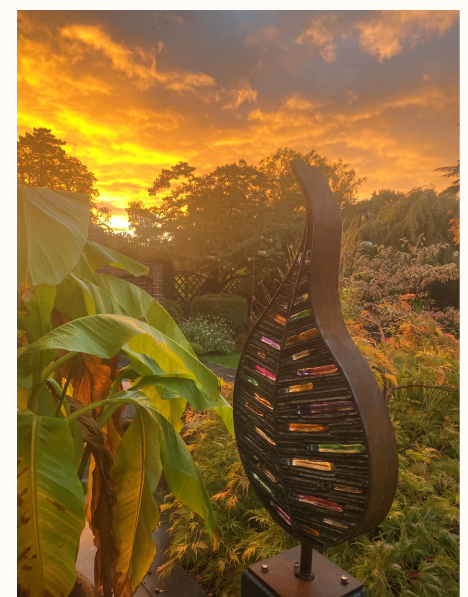


10 THE GARTH (GARDEN)

Earthlight Sculptures by Paul Burton

After a successful career in the mining supply industry experiencing so many locations and cultures. and post early retirement in 2017 Paul has returned full time to his art and first love of contemporary art, in particular sculpture. His return to art is influenced by experiences of living and working around the world in the mineral extraction industries, in diverse places ranging from the Gobi Desert, Siberia and India to the frozen wastes of the Arctic Circle.

His unique steel, slate and glass creations inspired by the earth's resources incorporate his unique "Earthlight" sculptures back into the landscape.





WORCESTER
CATHEDRAL

Prayer - Learning - Welcome



Open for visiting Monday to Saturday 10am - 5pm.
Sunday 1pm - 3pm.
(Some areas may be closed towards the end of the day)

There is no charge to visit, donations welcomed.

There is normally a member of the clergy available.

The Chapter Office, 8 College Yard, Worcester WR1 2LA

Telephone: 01905 732900

Email: info@worcestercathedral.org.uk

Website: www.worcestercathedral.co.uk

